

Annual Dane County Yahara WINS Adaptive Management Report



Annual report on Dane County Land & Water Resources Department efforts assisting with the implementation of conservation practices that reduce phosphorus runoff for the Yahara WINS Adaptive Management project.



2025 Report Year

CONTENTS

| | |
|---|----------|
| Annual Dane County Yahara WINS | 1 |
| Executive Summary | 1 |
| Key 2025 Yahara Watershed Accomplishments | 1 |
| Conservation Practices | 2 |
| Planned Practices | 2 |
| Implemented Practices | 2 |
| Phosphorus Reductions | 5 |
| Verification Checks | 5 |
| Funding Sources and Amounts | 6 |
| Nutrient Management | 8 |
| Highlights & Accomplishments | 9 |
| Door Creek Restoration | 9 |
| Dane County Annual Tillage Survey Findings | 10 |
| Field Day for Elected Officials | 10 |
| Cover Crop Implementation through the Biological Farmer Friends | 11 |
| Summary | 12 |
| Appendix | 13 |

LIST OF TABLES

Table 1. New and carryover pounds of phosphorus reduced by TMDL reach annually..... 5

Table 2. Acres of nutrient management plans mapped within the Yahara watershed..... 9

Table 3. Amount of conservation practices implemented in the Yahara watershed by TMDL reach and year..... 13

LIST OF FIGURES

Figure 1. Number of planned conservation practices within the Yahara watershed identified in the Dane County annual work plan. 2

Figure 2. Number of conservation practices implemented within the Yahara watershed. 3

Figure 3. Conservation practices implemented in the Yahara Watershed..... 4

Figure 4. Field verification and review of conservation practices. 6

Figure 5. Number of cost-share agreements by funding source. 7

Figure 6. Total cost-share dollars allocated by funding source annually within the Yahara watershed. 7

Figure 7. Map of submitted 2025 nutrient management plans in the Yahara watershed. 8

APPENDIX

Figure 8. TMDL Reach 62 new and carryover pounds of phosphorus reductions by year. 20

Figure 9. TMDL Reach 63 new and carryover pounds of phosphorus reductions by year. 21

Figure 10. TMDL Reach 64 new and carryover pounds of phosphorus reductions by year. 21

Figure 11. TMDL Reach 65 new and carryover pounds of phosphorus reductions by year. 22

Figure 12. TMDL Reach 66 new and carryover pounds of phosphorus reductions by year. 22

Figure 13. TMDL Reach 67 new and carryover pounds of phosphorus reductions by year. 23

Figure 14. TMDL Reach 68 new and carryover pounds of phosphorus reductions by year. 23

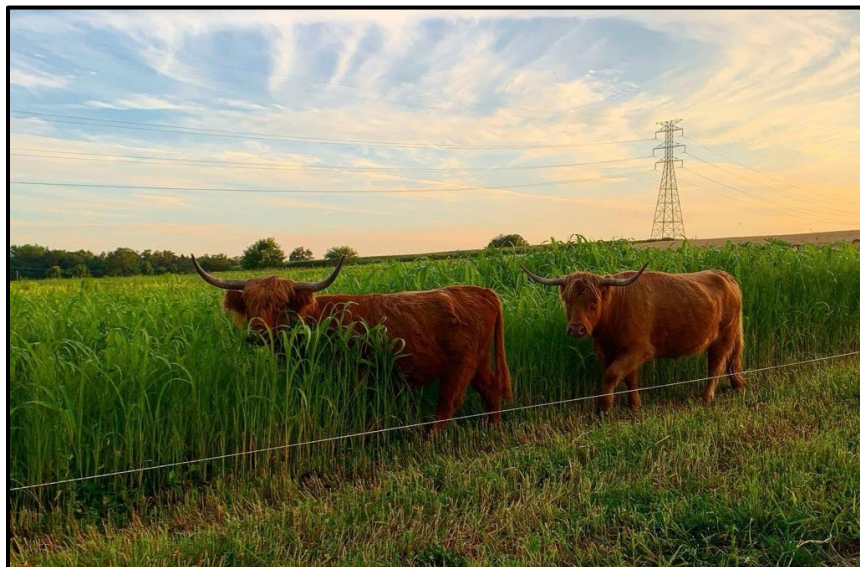
Figure 15. TMDL Reach 69 new and carryover pounds of phosphorus reductions by year. 24

Executive Summary

The Dane County Land & Water Resources Department (LWRD) continued its collaboration with the Yahara Watershed Improvement Network (WINS) to advance adaptive management within the Yahara watershed. Efforts included supporting rural landowners and producers in the voluntary implementation of conservation practices, as well as calculating and reporting the associated phosphorus reductions. This partnership celebrated its 14th year in 2025 and achieved continued success, which will be detailed further in this report.

Key 2025 Yahara Watershed Accomplishments

- Implemented 177 new conservation practices over the past year, resulting in a reduction of 5,002 pounds of phosphorus. When combined with previously implemented practices, the total phosphorus reduction in 2025 amounts to 20,034 pounds.
- Completed 343 practice verification checks to ensure that conservation practices were functioning properly.
- Entered into 58 cost-share agreements for conservation practices and systems.
- Allocated over \$1.2 million in cost-share assistance within the Yahara watershed.
- Tracked 66,143 acres of nutrient management plans within the Yahara watershed.
- Targeted implementation of cover crops in the Badfish Creek watershed through partnership with the Biological Farming Friends
- Investment in long-term practices that will reduce phosphorus in the Yahara Watershed, including the Door Creek Restoration project and the Continuous Cover Program.



Conservation Practices

The Land Conservation Division within the Land and Water Resources Department (LWRD) at Dane County works to protect and improve local land and water resources while providing benefits to both the environment and agricultural operations. The division manages voluntary conservation-related projects and programs which includes the plan, design, and implementation of agricultural conservation practices to reduce soil erosion and protect water quality.

Planned Practices

At the beginning of 2025, 47 conservation practices were identified (Figure 1) where Dane County LWRD staff would provide planning assistance. Many of these planned practices were voluntarily implemented by landowners and, throughout the year, additional conservation practices were designed and implemented.

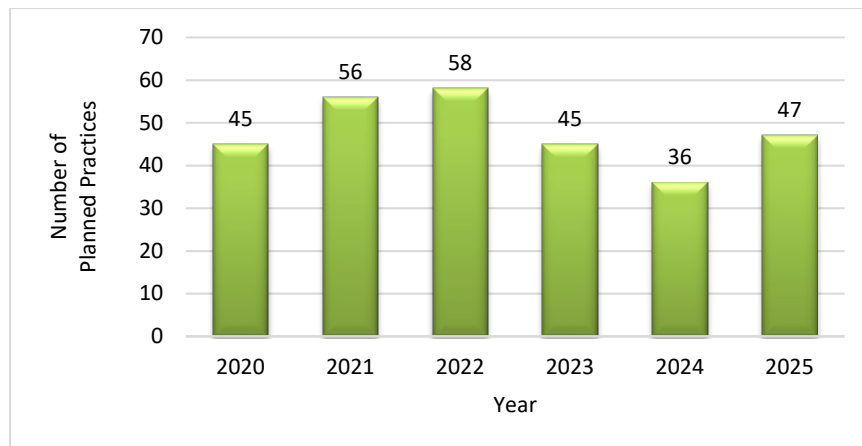


Figure 1. Number of planned conservation practices within the Yahara watershed identified in the Dane County annual work plan.

Implemented Practices

Over the last year, 177 conservation practices were implemented (Figure 2 and Figure 3) effectively reducing the amount of phosphorus that reaches nearby surface waters from runoff. The number of newly implemented practices aligns with increases in funding opportunities (Figure 5 and Figure 6). Cover crops again were the most common conservation practice implemented in 2025 with 5,035 acres. Fence and pipeline practices were also common in 2025 and are often associated with grazing systems. Other frequently implemented conservation practices include conservation cover, grassed waterways, and no-till management (

Table 3 in the appendix).

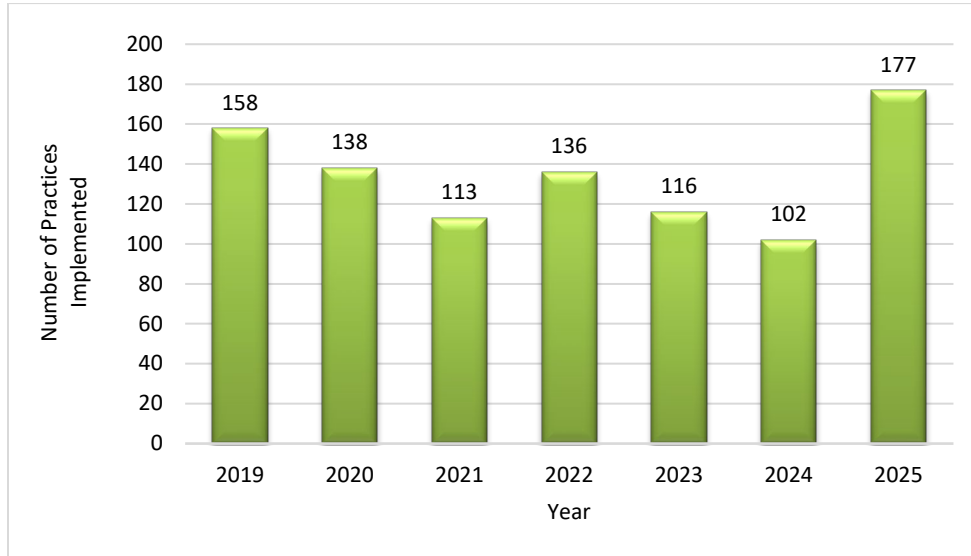


Figure 2. Number of conservation practices implemented within the Yahara watershed



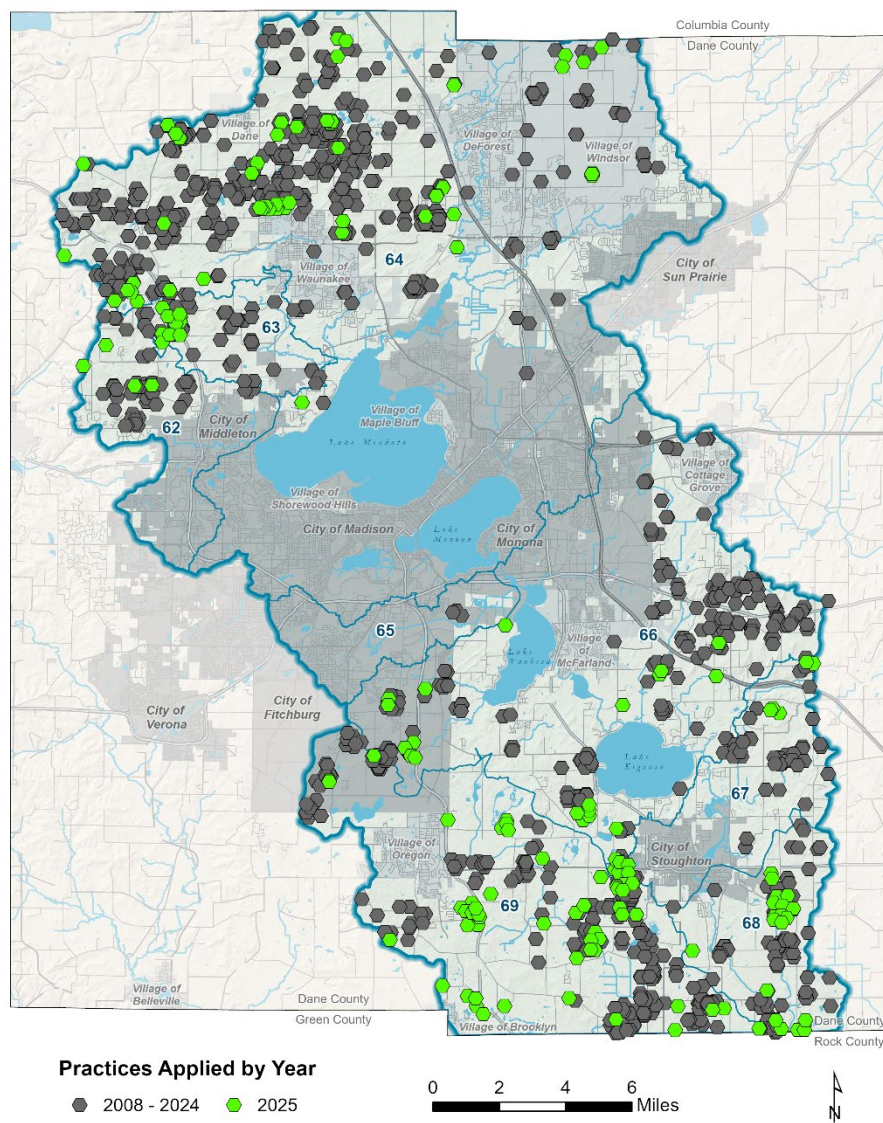


Figure 3. Conservation practices implemented in the Yahara Watershed.

Phosphorus Reductions

The implementation of new conservation practices in 2025 led to a reduction of 5,002.1 pounds of phosphorus. The pounds of phosphorus reduced from new conservation practices is considered *new* pounds. In contrast, previously established practices that are still functioning contributed to a reduction of 15,032.4 pounds of phosphorus, recognized as *carryover* pounds. In total, conservation practices achieved a reduction of 20,034.5 pounds of phosphorus in 2025.

Table 1 and Figure 8-Figure 15 (in the appendix) illustrate these reductions of phosphorus over time in the Yahara watershed and the corresponding TMDL reaches.

Table 1. New and carryover pounds of phosphorus reduced by TMDL reach annually.

| TMDL Reach | 2021 | | 2022 | | 2023 | | 2024 | | 2025 | |
|--------------|----------------|-----------------|-----------------|-----------------|----------------|-----------------|----------------|-----------------|----------------|-----------------|
| | New | Carryover | New | Carryover | New | Carryover | New | Carryover | New | Carryover |
| 62 | 442.3 | 167.7 | 307.4 | 186.1 | 381.9 | 186.1 | 499.6 | 409.3 | 219.3 | 677.6 |
| 63 | 464.9 | 1,562.3 | 707.1 | 1,616.3 | 541.0 | 1,702.0 | 448.7 | 1,407.1 | 156.3 | 1,487.1 |
| 64 | 3,300.6 | 4,244.8 | 3,819.6 | 4,069.3 | 4,504.2 | 4,712 | 3,151.5 | 5,578.1 | 1,832.8 | 5,120.3 |
| 65 | 0.0 | 174.2 | 0.0 | 182.2 | 12.7 | 182.2 | 7.8 | 182.2 | 0 | 182.2 |
| 66 | 900.1 | 5,198.5 | 520.0 | 5,411.6 | 416.7 | 5,238.8 | 678.5 | 4,953.2 | 215.4 | 4,113.6 |
| 67 | 408.3 | 523.2 | 263.6 | 523.2 | 314.9 | 853.3 | 212.7 | 821.9 | 83.2 | 668.9 |
| 68 | 985.8 | 779.9 | 657.8 | 788.6 | 490.0 | 849.7 | 484.9 | 846.1 | 294.8 | 853.2 |
| 69 | 1,352.0 | 1,333.5 | 1,582.8 | 1,453.5 | 1,114.3 | 1,717.4 | 632.3 | 1,957.3 | 2,200.3 | 1,929.5 |
| Total | 7,853.9 | 13,984.1 | 11,594.4 | 16,870.7 | 7,775.8 | 15,541.5 | 6,116.0 | 16,155.2 | 5,002.1 | 15,032.4 |

Verification Checks

Dane County LWRD staff inspected all of the 343 conservation practices that were identified for verification this past year. Inspected practices were located in the following TMDL reaches: 64, 65, 66, 67, 68, and 69. From the inspections, 338 (98.5%) practices were found to be functioning and maintained, while 5 (1.5%) practices were not functioning (Figure 4). Reasons for these practices no longer functioning is because the agriculture land was converted to residential use.

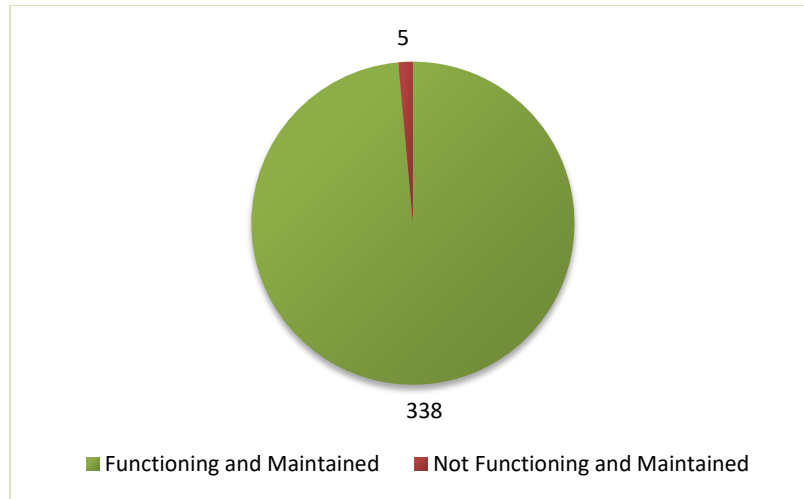


Figure 4. Field verification and review of conservation practices.

Funding Sources and Amounts

Dane County LWRD assisted with 58 new cost-share agreements with landowners, utilizing federal, county, and other funding sources (Figure 5) within the Yahara watershed. The total cost-share funding for these agreements was over \$1,252,749 (Figure 6). Since 2013, Dane County has assisted with over \$9.5 million in cost-share assistance for conservation practices aimed at reducing phosphorus in the watershed. Dane County strives to utilize and leverage all funding sources available including federal, county, and other sources (i.e. Yahara WINS, Clean Lakes Alliance grants, etc.) to support landowners and producers with conservation practices. The available funds and conditions vary annually by funding source, and the number of agreements are dependent on the interest from landowners and producers for implementing conservation practices.

Under the current Service Agreement, Yahara WINS provides Dane County with \$540,000 for assisting with implementing conservation practices and the WINS Adaptive Management project. In 2025, \$117,565 was contracted for cost share assistance, directly to landowners and individuals, to aid in implementing phosphorus reducing conservation practices. Any remaining funds under the Service Agreement are rolled over into the next year. The remaining, approximately, \$415,000 was used to partially fund staff and equipment required to plan, design, implement, document, verify, and map the conservation practices and nutrient management plans that were reported to Yahara WINS.

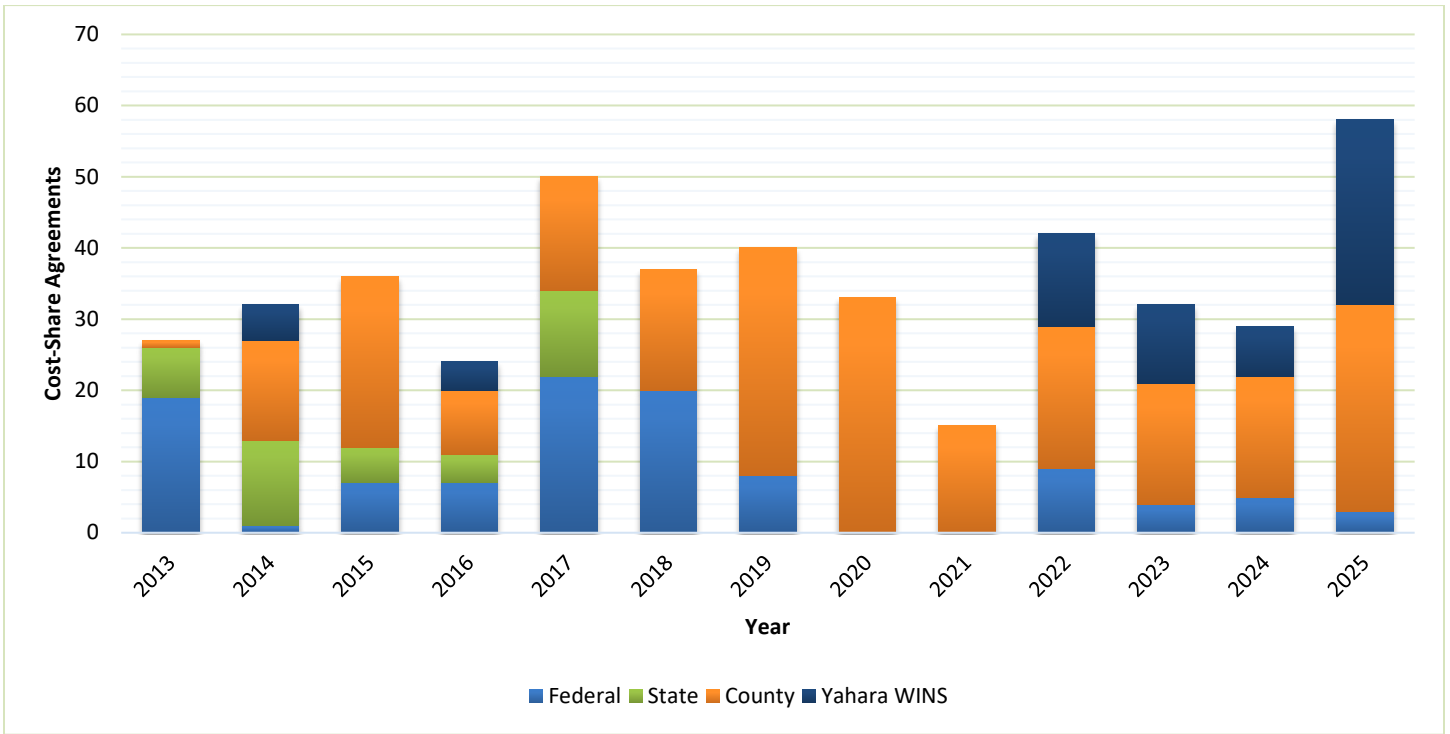


Figure 5. Number of cost-share agreements by funding source.

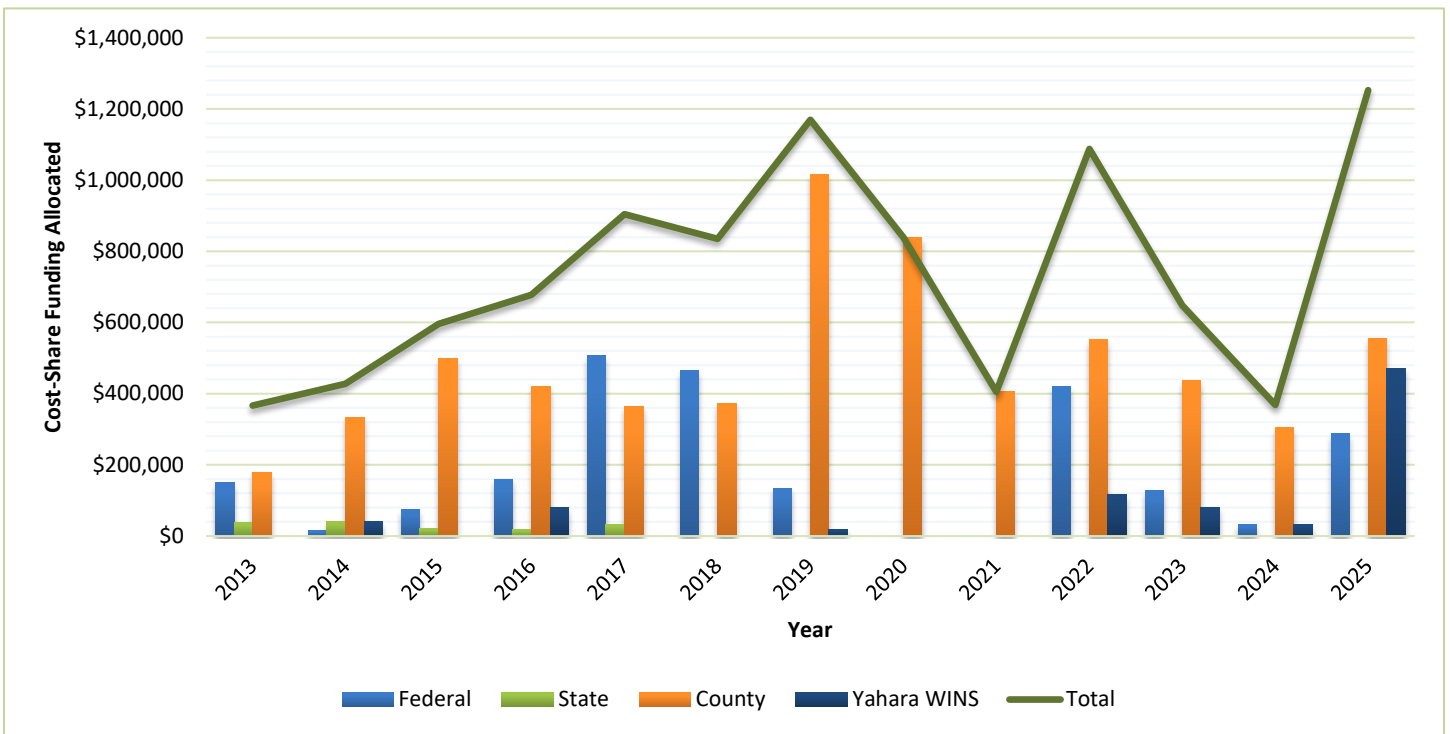


Figure 6. Total cost-share dollars allocated by funding source annually within the Yahara watershed.

Nutrient Management

Nutrient management involves planning for the use of manure and other fertilizers to meet crop nutrient needs in an economical way while reducing the potential for nutrient runoff from fields into lakes, streams, and groundwater. Nutrient management plans (NMP) continue to be received, reviewed, and mapped by Dane County staff. In 2025, 66,143 total acres were mapped within the Yahara watershed. The location of NMPs is documented in Figure 7 and the total number of acres for each TMDL reach are displayed in Table 2.

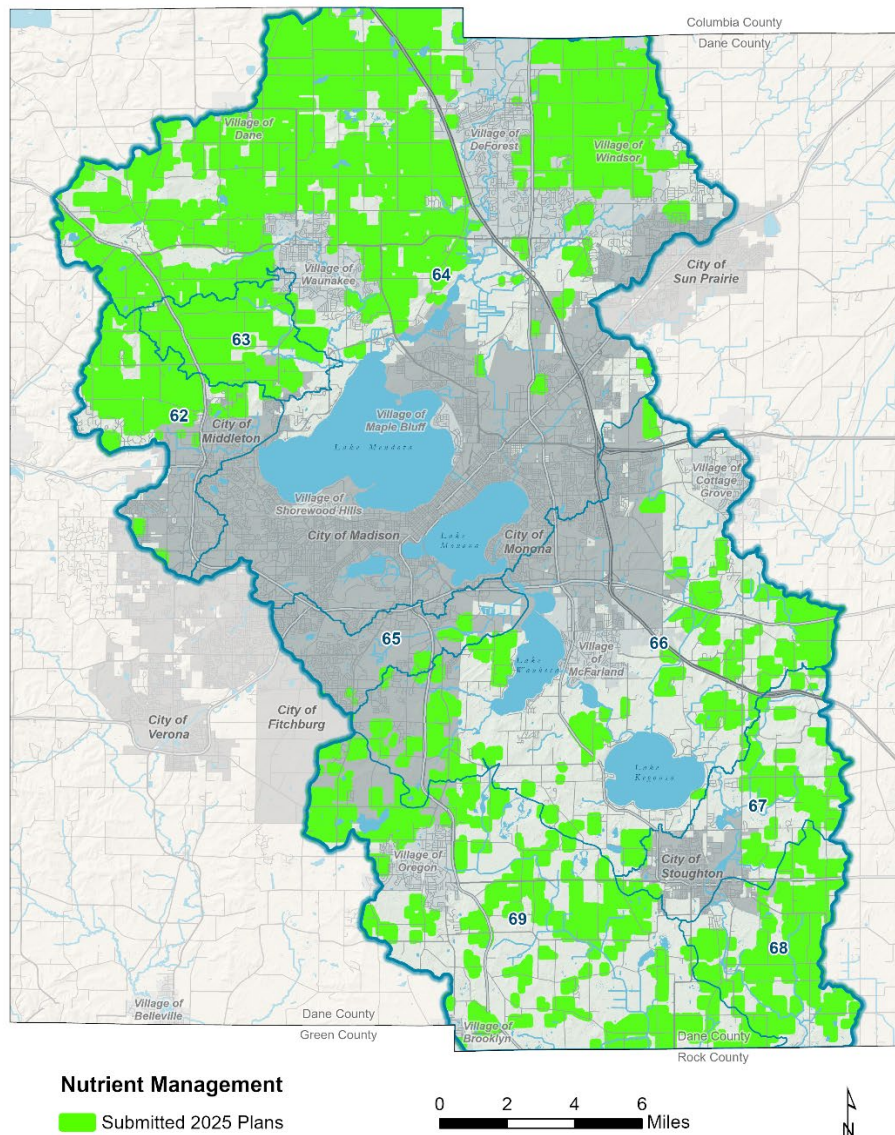


Figure 7. Map of submitted 2025 nutrient management plans in the Yahara watershed.

Table 2. Acres of nutrient management plans mapped within the Yahara watershed.

| TMDL Reach | 2020 | 2021 | 2022 | 2023 | 2024 | 2025 |
|--------------|---------------|---------------|---------------|---------------|---------------|---------------|
| 62 | 2,061 | 3,530 | 3,152 | 3,819 | 3,503 | 4,219 |
| 63 | 2,955 | 4,109 | 4,339 | 5,024 | 4,489 | 4,585 |
| 64 | 26,967 | 32,815 | 26,983 | 31,834 | 31,291 | 34,732 |
| 65 | 0 | 92 | 0 | 127 | 78 | 283 |
| 66 | 3,480 | 4,691 | 4,122 | 3,887 | 6,053 | 6,276 |
| 67 | 988 | 1,823 | 1,772 | 2,169 | 1,807 | 2,206 |
| 68 | 4,277 | 4,471 | 4,637 | 4,746 | 4,501 | 4,890 |
| 69 | 4,263 | 6,303 | 7,458 | 9,311 | 7,423 | 8,952 |
| TOTAL | 44,992 | 57,835 | 52,465 | 60,919 | 59,144 | 66,143 |

Highlights & Accomplishments

Door Creek Restoration

More than 15,000 feet of Door Creek was restored to its original alignment, and about 40,000 cubic feet of phosphorus-rich sediment was removed and safely contained on site. An additional 160 acres of former cropland were seeded to prairie to reduce runoff and improve habitat. These changes slow stormwater, filter nutrients before they reach local lakes, and support fish, amphibians, grassland birds, and pollinators. Learn more here:

<https://lwr.danecounty.gov/CurrentProjects/Detail/Door-Creek-Restoration>



Dane County Annual Tillage Survey Findings

The Crop & Tillage Transect Survey is a county-scale crop and tillage survey conducted by the Department’s staff each spring. The survey provides yearly snapshots and trends over time of data at over 1,000 points including: tillage practices, crop rotations, cover crops, and landuse. The survey has been conducted annually since 1994 with a 2-year gap from 2008 to 2009.



Conservation tillage has been an area of active research for its potential to reduce soil loss through erosion, combat climate change, and improve food security. Conservation tillage is generally described as agricultural operations that leave greater than 30% crop residue cover in the field and includes no-tillage practice. Survey data has found that there has been a downward trend of conventional tillage (< 15% of residue) in favor of an upward trend in conservation tillage (> 30% of residue). The Tillage Survey Dashboard provides a visual summary of the transect data. More information is available on-line at <https://lwrd.danecounty.gov/what-we-do/agriculture/transect-survey>

Field Day for Elected Officials

In August, the Sime Farm, a Dane Demo Farm, in Stoughton hosted a tour for elected officials from the Land Conservation Committee, Environment Agriculture & Natural Resources Committee, members of the County Board, and the Dane delegation of state representatives and senators. Attendees heard about the importance of conservation practices and programs the Sime Farm has participated in to build soil health, sustainability, and protect water quality.

The tour included a demonstration about soil health, a rainfall simulation, and a tour of Dane Demo Farms research plots. The Sime family has participated in a number of conservation efforts including cover crops, managed grazing, the

Continuous Cover Program, and is an active participant in the Dane Demo Farms initiative. This event gave staff the opportunity to showcase the conservation efforts and growing collaboration between the department and local farms.



Cover Crop Implementation through the Biological Farmer Friends

In 2025, Dane County collaborated the Biological Farmer Friends to promote cover crops in the Lower Yahara Watershed to improve soil health and protect local water quality. By providing financial incentives to producers, the program successfully transitioned thousands of acres into regenerative management practices. While the program’s financial incentives directly cost-shared 3,557 acres—distributing \$177,850 at a rate of \$50 per acre—it helped catalyze a total of 4,463 acres of cover crops planted across the landscape. This achievement means that nearly 15% of the watershed's 30,247 total cropland acres are now protected by cover crops, with the cost-share program alone accounting for 12% of that total footprint. By integrating cover crops into diverse rotations—including silage, post-corn and soybean acres, and following wheat harvest—the initiative effectively reduced nutrient runoff and enhanced soil health across the landscape.

Photo: A winter wheat cover crop was precision-seeded via drone prior to the application of municipal waste. This proactive strategy utilizes living roots to scavenge nutrients throughout the winter, significantly reducing runoff by enhancing soil porosity and increasing water infiltration.



Summary

The continued partnership between Dane County and Yahara WINS resulted in another successful year of conservation implementation to improve water quality in the Yahara watershed. In 2025, 177 new practices were implemented and 343 practices were verified to confirm that they were functioning. Yahara WINS continued to provide funding to aid Dane County in conservation practice implementation. Newly implemented conservation practices reduced the amount of phosphorus entering nearby surface waters by 5,002.1 pounds. Adding this to the 15,032.4 pounds of phosphorus reduced from previously implemented practices, the total phosphorus reduction in this past year was 20,034.5 pounds. In addition to implemented conservation practices, NMPs covered 66,143 acres in the Yahara watershed. Dane County LWRD is dedicated to protecting and improving the natural resources of the county and looks forward to its continued partnership with Yahara WINS to advance environmental and conservation initiatives.

Appendix

Table 3. Amount of conservation practices implemented in the Yahara watershed by TMDL reach and year.

| TMDL Reach | Practice | Units | 2021 | 2022 | 2023 | 2024 | 2025 | Total Amount Since 2008 |
|------------|--------------------------------|-------|-------|-------|-------|-------|-------|-------------------------|
| 62 | Cover Crop | Ac | 0.0 | 0.0 | 0.0 | 165.4 | 332.3 | 1,127.3 |
| | Critical Area Planting | Ac | 0.0 | 0.0 | 0.0 | 0.0 | 0.0 | 0.5 |
| | Diversion | Ft | 0.0 | 0.0 | 0.0 | 0.0 | 0.0 | 264.0 |
| | Grade Stabilization Structure | No | 0.0 | 0.0 | 0.0 | 0.0 | 0.0 | 1.0 |
| | Grassed Waterway | Ac | 2.6 | 0.0 | 0.0 | 0.6 | 0.0 | 6.9 |
| | Lined Waterway | Ft | 291.5 | 0.0 | 0.0 | 0.0 | 0.0 | 291.5 |
| | No Till Drill (Equipment) | No | 0.0 | 0.0 | 0.0 | 0.0 | 1.0 | 1.0 |
| | Pasture and Hay Planting | Ac | 0.0 | 0.0 | 0.0 | 0.0 | 0.0 | 5.5 |
| | Prairie Restoration | Ac | 0.0 | 0.0 | 0.0 | 40.7 | 0.0 | 40.7 |
| | Roof Runoff Structure | No | 0.0 | 0.0 | 0.0 | 0.0 | 0.0 | 1.0 |
| | Stream Crossing | No | 0.0 | 0.0 | 0.0 | 1.0 | 0.0 | 1.0 |
| | Waste Storage Facility | No | 0.0 | 0.0 | 0.0 | 0.0 | 0.0 | 1.0 |
| | | | | | | 0.0 | | |
| 63 | Closure of Waste Impound | No | 0.0 | 0.0 | 0.0 | 0.0 | 0.0 | 2.0 |
| | Cover Crop | Ac | 0.0 | 136.6 | 135.5 | 0.0 | 236.8 | 782.2 |
| | Dane County Perpetual Easement | Ac | 0.0 | 0.0 | 0.0 | 0.0 | 0.0 | 3.0 |
| | Filter Strip | Ac | 0.0 | 0.0 | 0.0 | 0.0 | 0.0 | 9.6 |

| TMDL Reach | Practice | Units | 2021 | 2022 | 2023 | 2024 | 2025 | Total Amount Since 2008 |
|--------------------------------------|----------------------------|--------------|-------------|-------------|-------------|-------------|-------------|--------------------------------|
| 63 | Grassed Waterway | Ac | 3.1 | 0.0 | 0.1 | 0.0 | 1.2 | 9.45 |
| | Heavy Use Area Protection | Ac | 0.0 | 0.0 | 0.0 | 0.0 | 0.0 | 4.2 |
| | Mulching | Ac | 0.0 | 0.0 | 0.1 | 0.0 | 0.0 | 0.1 |
| | No Till Drill | Ac | 0.0 | 136.6 | 0.0 | 0.0 | 0.0 | 136.6 |
| | No Till Drill (Equipment) | No | 0.0 | 0.0 | 0.0 | 1.0 | 0.0 | 1.0 |
| | Prairie Restoration | Ac | 0.0 | 0.0 | 0.0 | 0.0 | 0.0 | 0.0 |
| | Roof Runoff Structure | No | 0.0 | 0.0 | 0.0 | 0.0 | 0.0 | 2.0 |
| | Waste Facility Closure | No | 0.0 | 1.0 | 0.0 | 0.0 | 0.0 | 1.0 |
| | Waste Storage Facility | No | 0.0 | 0.0 | 0.0 | 0.0 | 0.0 | 1.0 |
| Water and Sediment Control Structure | No | 0.0 | 0.0 | 0.0 | 0.0 | 0.0 | 1.0 | |
| 64 | Access Control | Ac | 0.0 | 0.0 | 0.0 | 0.0 | 0.0 | 2.9 |
| | Animal Trails and Walkways | Ft | 0.0 | 0.0 | 0.0 | 0.0 | 0.0 | 478.0 |
| | Conservation Cover | Ac | 1.4 | 0.0 | 0.0 | 0.0 | 0.0 | 16.1 |
| | Cover Crop | Ac | 217.3 | 1,216.2 | 1,938.5 | 900.6 | 1,599.1 | 12,174.55 |
| | Critical Area Planting | Ac | 0.0 | 0.0 | 1.5 | 0.0 | 0.0 | 9.6 |
| | Diversion | Ft | 3,232.0 | 0.0 | 0.0 | 0.0 | 0.0 | 6,022.0 |
| | Fence | Ft | 720.0 | 0.0 | 9,285.0 | 0.0 | 0.0 | 16,825.0 |
| | Filter Strip | Ac | 0.0 | 0.0 | 0.0 | 0.0 | 0.0 | 18.5 |

| TMDL Reach | Practice | Units | 2021 | 2022 | 2023 | 2024 | 2025 | Total Amount Since 2008 |
|--|-------------------------------|--------------|-------------|-------------|-------------|-------------|-------------|--------------------------------|
| 64 | Grade Stabilization Structure | No | 0.0 | 0.0 | 0.0 | 0.0 | 0.0 | 5.0 |
| | Grassed Waterway | Ac | 4.0 | 3.1 | 1.3 | 3.0 | 4.07 | 42.47 |
| | Heavy Use Area Protection | Ac | 0.0 | 0.0 | 0.0 | 0.0 | 0.86 | 4.16 |
| | Lined Waterway or Outlet | Ft | 0.0 | 0.0 | 0.0 | 0.0 | 0.0 | 1,195.0 |
| | Lot Relocation or Abandonment | No | 0.0 | 0.0 | 0.0 | 0.0 | 0.0 | 1.0 |
| | Manure Transfer | No | 0.0 | 0.0 | 0.0 | 0.0 | 0.0 | 5.0 |
| | Mulching | Ac | 0.0 | 0.0 | 2.8 | 0.0 | 0.0 | 2.8 |
| | No Till Drill | Ac | 0.0 | 90.3 | 0.0 | 0.0 | 0.0 | 90.3 |
| | No Till Drill (Equipment) | No | 0.0 | 0.0 | 1.0 | 4.0 | 2.0 | 7.0 |
| | Obstruction Removal | Ac | 0.0 | 0.0 | 0.0 | 0.0 | 0.0 | 0.1 |
| | Pasture and Hay Planting | Ac | 0.0 | 0.0 | 0.0 | 0.0 | 0.0 | 67.9 |
| | Pond Sealing or Lining | Ac | 0.0 | 0.0 | 0.0 | 0.0 | 0.6 | 0.6 |
| | Prairie Restoration | Ac | 0.0 | 0.0 | 0.0 | 5.7 | 6.5 | 12.19 |
| | Prescribed Grazing | Ac | 0.0 | 0.0 | 0.0 | 0.0 | 0.0 | 66.2 |
| | Roof Runoff Structure | No | 0.0 | 5.0 | 0.0 | 9.0 | 0.0 | 20.0 |
| | Stormwater Runoff Control | No | | | | | 1.0 | 1.0 |
| | Stream Crossing | No | 0.0 | 0.0 | 1.0 | 0.0 | 1.0 | 4.0 |
| Streambank and Shoreline Stabilization | Ft | 700.0 | 0.0 | 0.0 | 0.0 | 0.0 | 2,225.0 | |

| TMDL Reach | Practice | Units | 2021 | 2022 | 2023 | 2024 | 2025 | Total Amount Since 2008 |
|-------------------|--------------------------------------|--------------|-------------|-------------|-------------|-------------|-------------|--------------------------------|
| 64 | Subsurface Drain | Ft | 0.0 | 0.0 | 0.0 | 0.0 | 0.0 | 1,380.0 |
| | Underground Outlet | Ft | 0.0 | 452.0 | 0.0 | 0.0 | 0.0 | 452.0 |
| | Waste Facility Closure | No | 1.0 | 1.0 | 4.0 | 0.0 | 0.0 | 7.0 |
| | Waste Storage Facility | No | 0.0 | 1.0 | 1.0 | 0.0 | 1.0 | 11.0 |
| | Waste Transfer | No | 0.0 | 0.0 | 1.0 | 0.0 | 4.0 | 5.0 |
| | Wastewater Treatment Strip | Ac | 0.0 | 0.0 | 0.0 | 0.0 | 0.0 | 0.6 |
| | Water and Sediment Control Structure | No | 0.0 | 0.0 | 0.0 | 0.0 | 0.0 | 2.0 |
| | Well Decommissioning | No | 0.0 | 0.0 | 0.0 | 0.0 | 0.0 | 1.0 |
| | Wetland Restoration | Ac | 0.0 | 0.0 | 0.0 | 0.0 | 0.0 | 78.0 |
| 65 | Grassed Waterway | Ac | 0.0 | 0.0 | 0.0 | 0.0 | 0.0 | 3.3 |
| 66 | Access Road | Ft | 0.0 | 392.0 | 0.0 | 0.0 | 0.0 | 5,003.0 |
| | Conservation Cover | Ac | 35.4 | 29.2 | 0.0 | 1.7 | 13.8 | 198.3 |
| | Cover Crop | Ac | 219.0 | 23.1 | 140.0 | 371.4 | 200.1 | 1,090.14 |
| | Critical Area Planting | Ac | 6.5 | 0.0 | 0.0 | 0.0 | 0.0 | 6.5 |
| | Diversion | Ft | 0.0 | 0.0 | 0.0 | 0.0 | 0.0 | 4,300.0 |
| | Fence | Ft | 4,800.0 | 2,793.0 | 2,430.0 | 2,095.0 | 4,455 | 34,103 |
| | Filter Strip | Ac | 0.0 | 0.0 | 0.0 | 0.0 | 0.0 | 65.4 |
| | Forage and Biomass Planting | Ac | 24.8 | 0.0 | 0.0 | 0.0 | 0.0 | 95.5 |

| TMDL Reach | Practice | Units | 2021 | 2022 | 2023 | 2024 | 2025 | Total Amount Since 2008 |
|--------------------------|-------------------------------|--------------|-------------|-------------|-------------|-------------|-------------|--------------------------------|
| 66 | Forage Harvest Management | Ac | 0.0 | 0.0 | 0.0 | 0.0 | 0.0 | 45.1 |
| | GPS Collars | No | | | | | 1.0 | 1.0 |
| | Grade Stabilization Structure | No | 0.0 | 0.0 | 0.0 | 0.0 | 0.0 | 2.0 |
| | Grassed Waterway | Ac | 0.4 | 0.0 | 0.0 | 0.0 | 0.2 | 37.13 |
| | Heavy Use Area Protection | Ac | 0.0 | 0.0 | 0.0 | 0.0 | 0.0 | 0.1 |
| | Lined Waterway or Outlet | Ft | 0.0 | 0.0 | 0.0 | 0.0 | 0.0 | 249.0 |
| | Livestock Pipeline | Ft | 0.0 | 0.0 | 120.0 | 0.0 | 0.0 | 6,450.0 |
| | No Till Drill (Equipment) | No | 0.0 | 0.0 | 2.0 | 0.0 | 0.0 | 2.0 |
| | Pasture and Hay Planting | Ac | 0.0 | 0.0 | 0.0 | 0.0 | 0.0 | 33.8 |
| | Prairie Restoration | Ac | 0.0 | 0.0 | 0.0 | 0.0 | 3.2 | 3.2 |
| | Prescribed Grazing | Ac | 36.1 | 11.3 | 0.0 | 0.0 | 26.7 | 98.7 |
| | Roof Runoff Structure | No | 0.0 | 0.0 | 0.0 | 0.0 | 0.0 | 1.0 |
| | Sediment Basin | No | 0.0 | 0.0 | 0.0 | 0.0 | 0.0 | 1.0 |
| | Shallow Water Development | Ac | 0.0 | 0.0 | 0.0 | 0.0 | 0.0 | 10.9 |
| | Stream Crossing | No | 0.0 | 0.0 | 0.0 | 0.0 | 0.0 | 4.0 |
| Terrace | Ft | 0.0 | 0.0 | 0.0 | 0.0 | 0.0 | 558.0 | |
| Tree/Shrub Establishment | Ac | 0.0 | 0.0 | 0.0 | 0.0 | 0.0 | 18.8 | |
| Underground Outlet | Ft | 0.0 | 0.0 | 0.0 | 0.0 | 0.0 | 250.0 | |

| TMDL Reach | Practice | Units | 2021 | 2022 | 2023 | 2024 | 2025 | Total Amount Since 2008 |
|-------------------|--------------------------------------|--------------|-------------|-------------|-------------|-------------|-------------|--------------------------------|
| | Wastewater Treatment Strip | Ac | 0.0 | 0.0 | 0.0 | 0.0 | 0.0 | 0.2 |
| | Water and Sediment Control Structure | No | 0.0 | 0.0 | 0.0 | 0.0 | 0.0 | 1.0 |
| | Watering Facility | No | 0.0 | 0.0 | 1.0 | 0.0 | 0.0 | 2.0 |
| | Wetland Restoration | Ac | 0.0 | 0.0 | 0.0 | 0.0 | 0.0 | 9.2 |
| | | | | | | | | |
| 67 | Conservation Cover | Ac | 0.0 | 0.0 | 0.0 | 17.5 | 10.5 | 28 |
| | Cover Crop | Ac | 356.1 | 53.3 | 0.0 | 0.0 | 96.4 | 899.3 |
| | Fence | Ft | 0.0 | 0.0 | 8,775.0 | 0.0 | 0.0 | 13,036.0 |
| | Filter Strip | Ac | 0.0 | 0.0 | 0.0 | 0.0 | 0.0 | 34.3 |
| | Forage and Biomass Planting | Ac | 0.0 | 31.2 | 23.9 | 0.0 | 0.0 | 55.1 |
| | Grassed Waterway | Ac | 0.0 | 0.0 | 0.5 | 0.0 | 0.0 | 2.9 |
| | Livestock Pipeline | Ft | 0.0 | 700.0 | 0.0 | 0.0 | 0.0 | 3,770.0 |
| | Mulching | Ac | 0.0 | 0.0 | 0.5 | 0.0 | 0.0 | 0.5 |
| | No Till Drill | Ac | 211.0 | 0.0 | 0.0 | 0.0 | 0.0 | 211.0 |
| | No Till Drill (Equipment) | No | 0.0 | 0.0 | 0.0 | 0.0 | 1.0 | 1.0 |
| | Pasture and Hay Planting | Ac | 0.0 | 0.0 | 0.0 | 0.0 | 0.0 | 4.2 |
| | Prescribed Grazing | Ac | 0.0 | 31.2 | 23.9 | 0.0 | 0.0 | 112.3 |
| | Tree/Shrub Establishment | Ac | 0.0 | 0.0 | 0.0 | 0.0 | 0.0 | 4.7 |
| | | | | | | | | |

| TMDL Reach | Practice | Units | 2021 | 2022 | 2023 | 2024 | 2025 | Total Amount Since 2008 |
|---------------------|-------------------------------|--------------|-------------|-------------|-------------|-------------|-------------|--------------------------------|
| 68 | Conservation Cover | Ac | 0.0 | 5.0 | 0.0 | 0.0 | 0.0 | 5.0 |
| | Cover Crop | Ac | 473.9 | 144.9 | 77.2 | 179.2 | 446.8 | 2,235.34 |
| | Fence | Ft | 5,680.0 | 0.0 | 0.0 | 8,925.0 | 5,140 | 47,089 |
| | Filter Strip | Ac | 0.0 | 0.0 | 0.0 | 0.0 | 0.0 | 14.7 |
| | Forage and Biomass Planting | Ac | 7.2 | 13.0 | 0.0 | 0.0 | 0.0 | 20.2 |
| | Grade Stabilization Structure | No | 0.0 | 0.0 | 0.0 | 0.0 | 0.0 | 1.0 |
| | Grassed Waterway | Ac | 0.0 | 0.0 | 0.0 | 0.0 | 0.0 | 5.3 |
| | Heavy Use Area Protection | Ac | 0.0 | 0.0 | 0.0 | 0.0 | 0.0 | 1.0 |
| | Livestock Pipeline | Ft | 325.0 | 990.0 | 0.0 | 1,920.0 | 0.0 | 9,085.0 |
| | No Till Drill | Ac | 294.9 | 0.0 | 0.0 | 0.0 | 0.0 | 294.9 |
| | Prescribed Grazing | Ac | 31.4 | 0.0 | 0.0 | 0.0 | 0.0 | 70.6 |
| | Shallow Water Development | Ac | 0.0 | 0.0 | 0.0 | 0.0 | 0.0 | 10.0 |
| | Tree/Shrub Establishment | Ac | 0.0 | 0.0 | 0.0 | 0.0 | 0.0 | 1.0 |
| | Watering Facility | No | 1.0 | 0.0 | 0.0 | 1.0 | 0.0 | 2.0 |
| Water Well | No | 0.0 | 0.0 | 0.0 | 1.0 | 0.0 | 1.0 | |
| Wetland Restoration | Ac | 0.0 | 0.0 | 0.0 | 0.0 | 0.0 | 10.0 | |
| 69 | Conservation Cover | Ac | 22.0 | 0.0 | 5.7 | 3.3 | 51.1 | 206.3 |
| | Cover Crop | Ac | 1,239.5 | 1,152.0 | 348.7 | 676.0 | 0.0 | 5,330.7 |

| TMDL Reach | Practice | Units | 2021 | 2022 | 2023 | 2024 | 2025 | Total Amount Since 2008 |
|--------------------------|--------------------------------------|--------------|-------------|-------------|-------------|-------------|-------------|--------------------------------|
| 69 | Critical Area Planting | Ac | 0.0 | 0.0 | 0.0 | 0.0 | 0.0 | 25.6 |
| | Fence | Ft | 17,725.0 | 14,299.0 | 3,008.0 | 13,154.0 | 1,700 | 57,936 |
| | Filter Strip | Ac | 0.0 | 0.0 | 0.0 | 0.0 | 0.0 | 56.5 |
| | Forage and Biomass Planting | Ac | 27.0 | 0.0 | 32.1 | 0.0 | 0.0 | 81.1 |
| | Grade Stabilization Structure | No | 0.0 | 1.0 | 0.0 | 0.0 | 0.0 | 1.0 |
| | Grassed Waterway | Ac | 0.0 | 0.3 | 0.0 | 0.0 | 1.0 | 11.1 |
| | Livestock Pipeline | Ft | 0.0 | 1,830.0 | 0.0 | 3,550.0 | 0.0 | 8,380.0 |
| | No Till Drill (Equipment) | No | 0.0 | 0.0 | 5.0 | 2.0 | 1.0 | 8.0 |
| | Prescribed Grazing | Ac | 39.0 | 0.0 | 5.7 | 0.0 | 84.5 | 129.2 |
| | Roof Runoff Structure | No | 0.0 | 0.0 | 0.0 | 0.0 | 0.0 | 2.0 |
| | Shallow Water Development | Ac | 0.0 | 0.0 | 0.0 | 0.0 | 0.0 | 3.5 |
| | Silvopasture | Ac | 0.0 | 0.0 | 0.0 | 0.0 | 3.3 | 3.3 |
| | Stream Crossing | No | 0.0 | 1.0 | 0.0 | 0.0 | 0.0 | 1.0 |
| | Waste Facility Closure | No | 0.0 | 0.0 | 0.0 | 0.0 | 0.0 | 1.0 |
| | Water and Sediment Control Structure | No | 0.0 | 0.0 | 0.0 | 0.0 | 0.0 | 1.0 |
| | Watering Facility | No | 0.0 | 2.0 | 0.0 | 0.0 | 0.0 | 2.0 |
| | Wetland Restoration | Ac | 0.0 | 0.0 | 0.0 | 0.0 | 0.0 | 2.0 |
| Wetland Wildlife Habitat | Ac | 0.0 | 0.0 | 0.0 | 0.0 | 0.0 | 9.6 | |

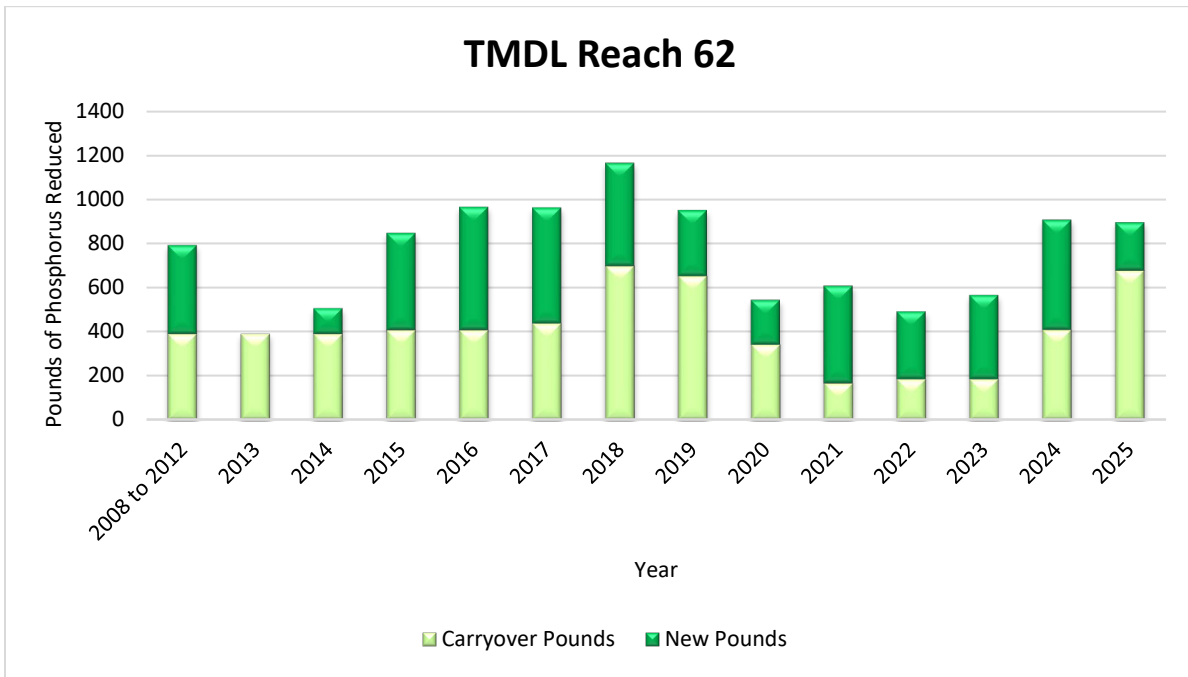


Figure 8. TMDL Reach 62 new and carryover pounds of phosphorus reductions by year.

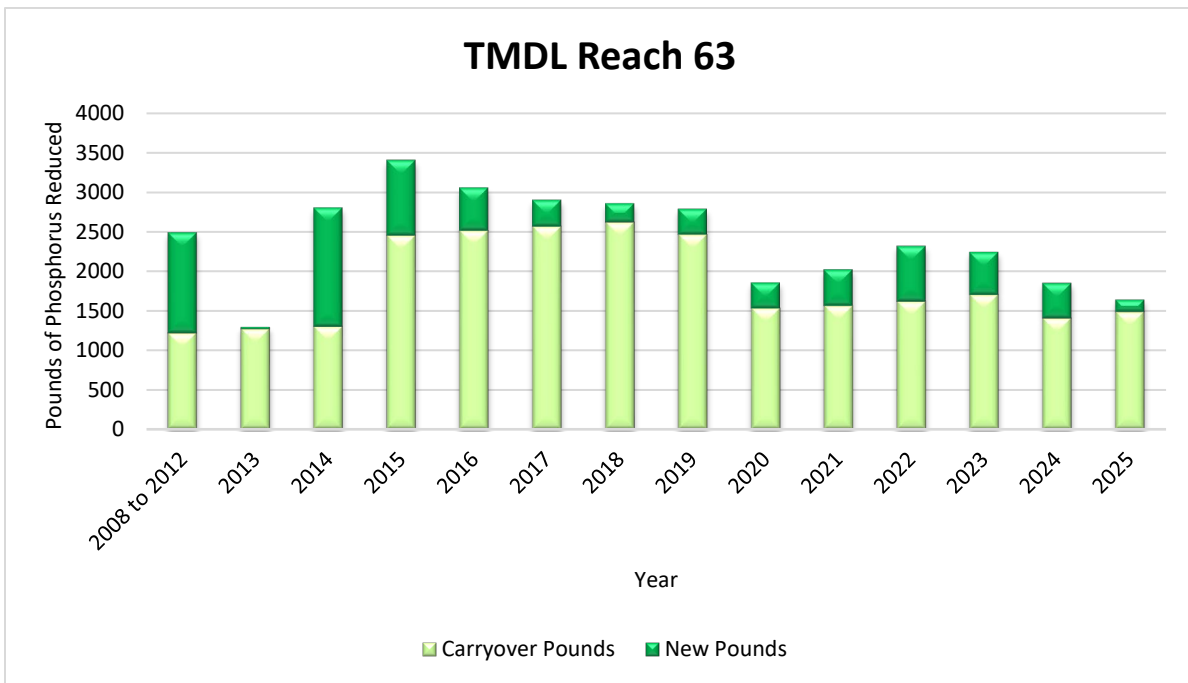


Figure 9. TMDL Reach 63 new and carryover pounds of phosphorus reductions by year.

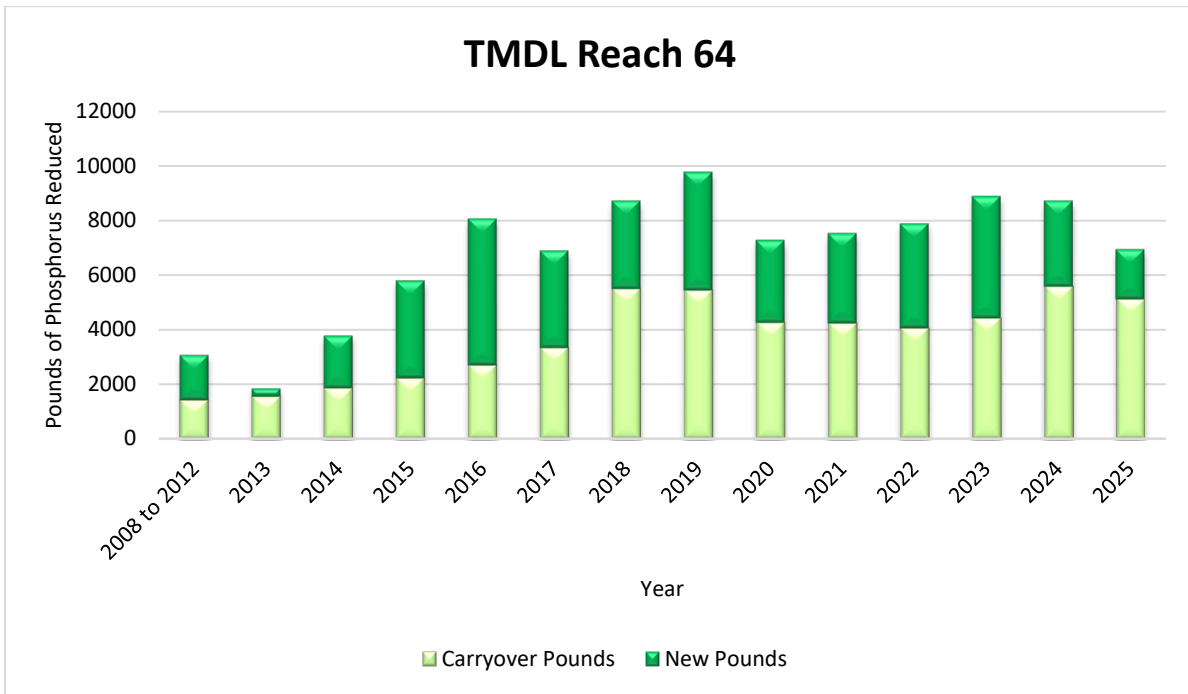


Figure 10. TMDL Reach 64 new and carryover pounds of phosphorus reductions by year.

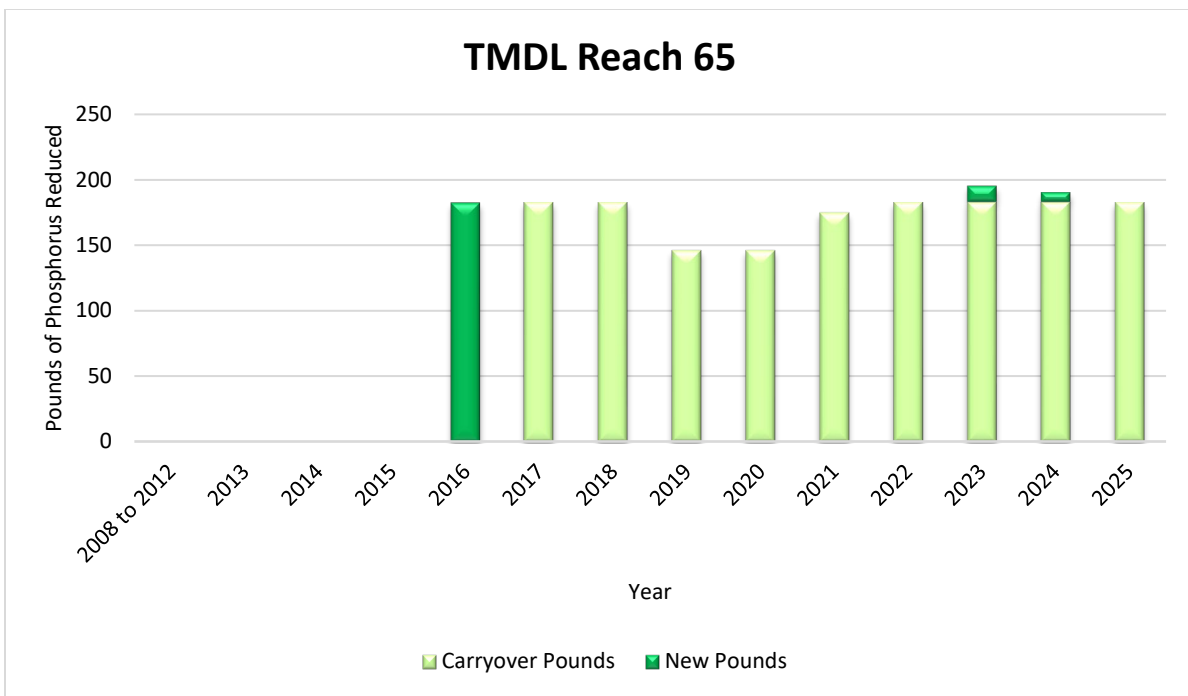


Figure 11. TMDL Reach 65 new and carryover pounds of phosphorus reductions by year.

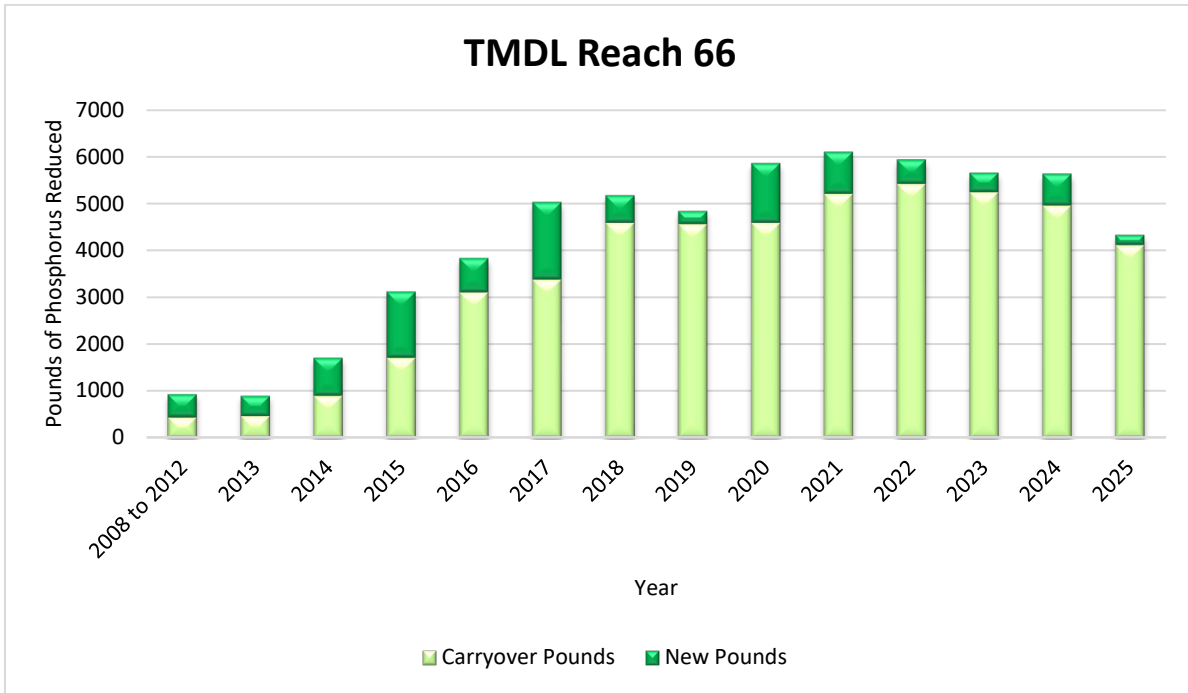


Figure 12. TMDL Reach 66 new and carryover pounds of phosphorus reductions by year.

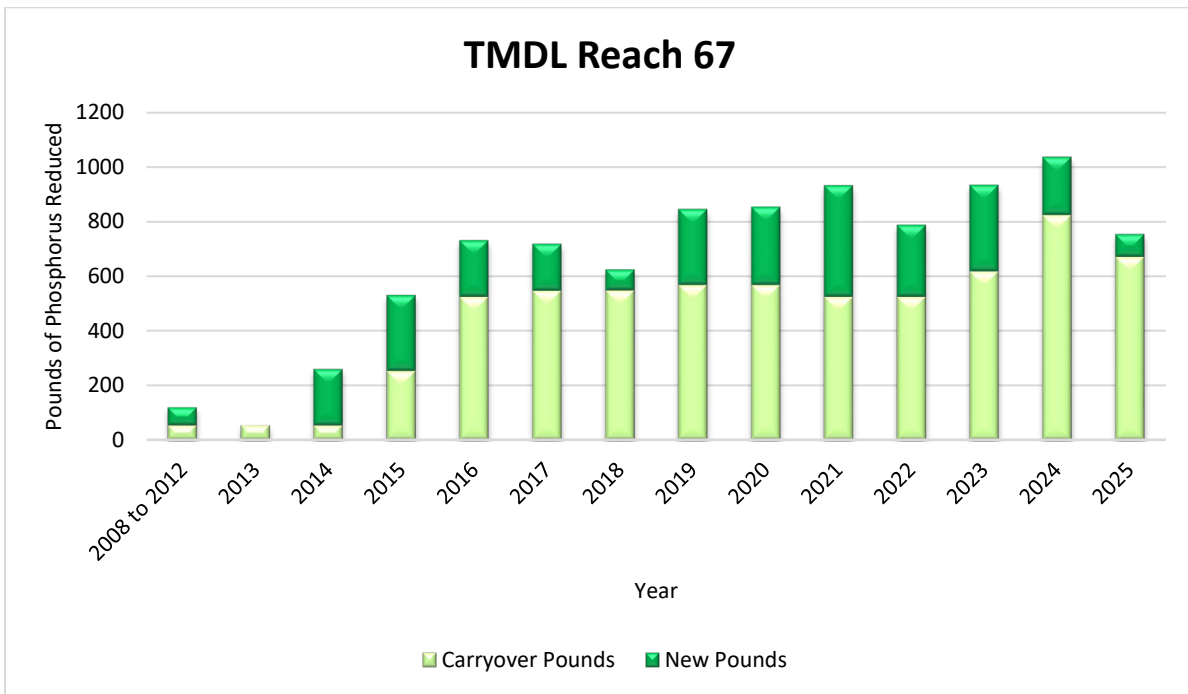


Figure 13. TMDL Reach 67 new and carryover pounds of phosphorus reductions by year.

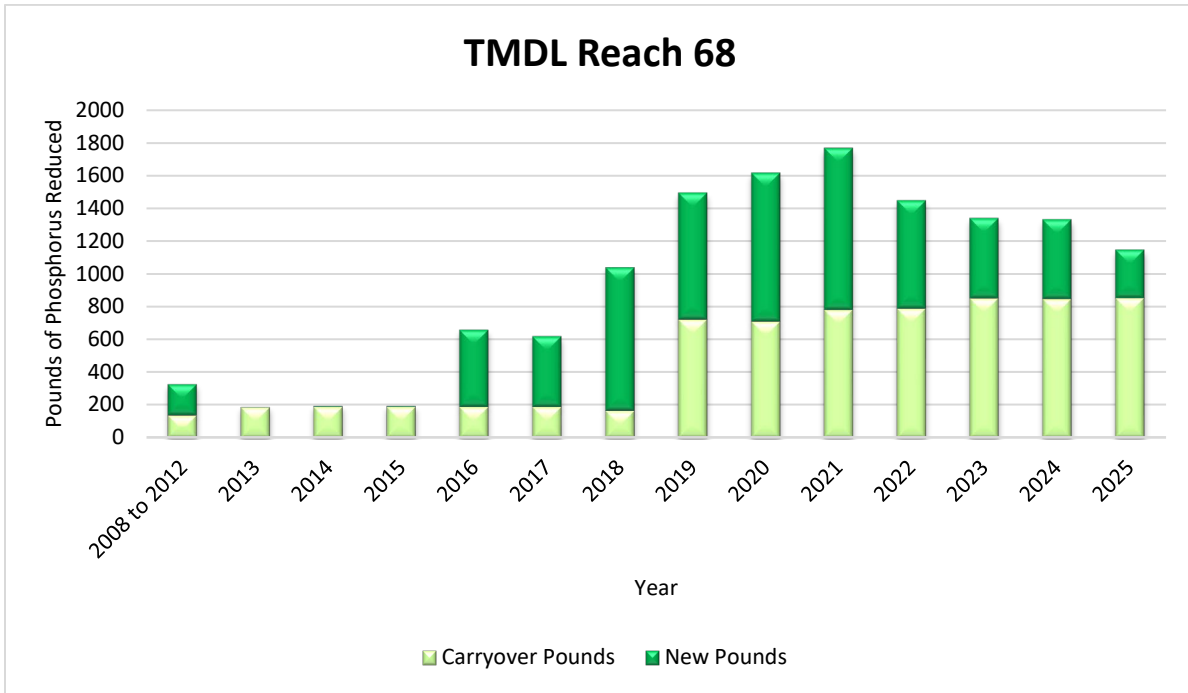


Figure 14. TMDL Reach 68 new and carryover pounds of phosphorus reductions by year.

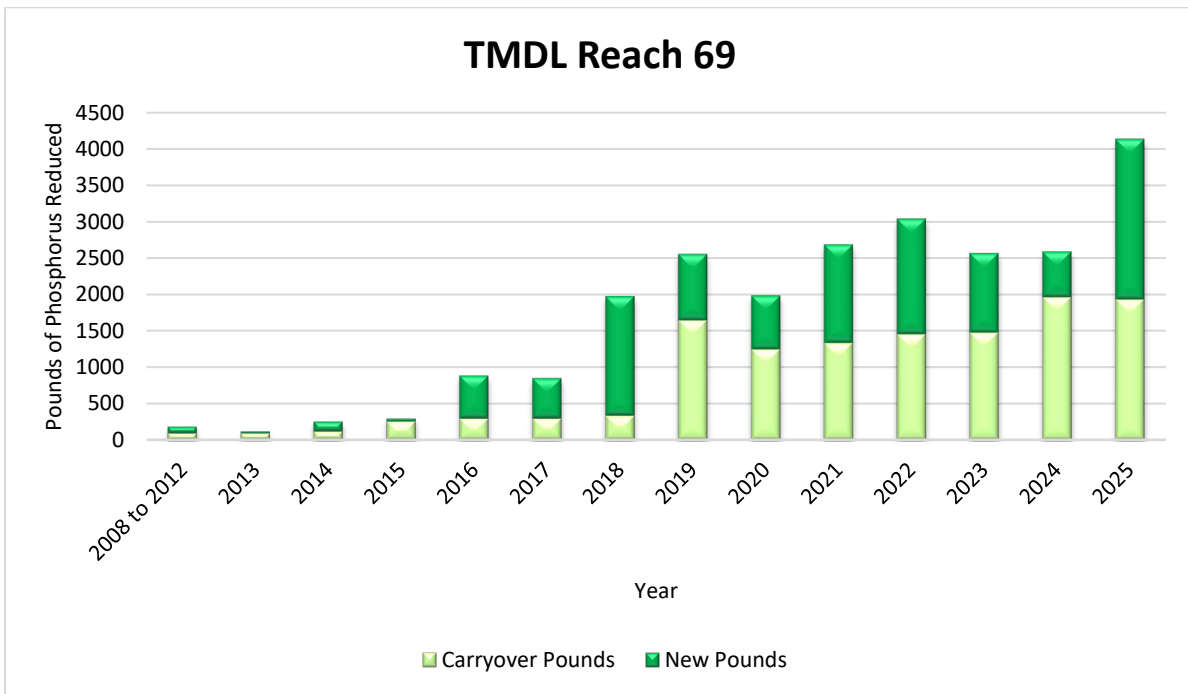


Figure 15. TMDL Reach 69 new and carryover pounds of phosphorus reductions by year.